



Load Arrestor Range

GSE300/500/1000

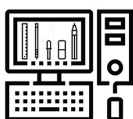
Range Features

- Manufactured in the UK
- 300kg, 500kg and 1000kg MWL options
- Static or moving loads
- Galvanised or stainless steel cables available
- Stopping distance of approx. 0.3m to 0.7m
- weight: 9-21.5kg
- Maximum running speed: 0.6m/sec
- CE Certified. Conforms to European Directive 2006/42/EC



Hoist UK's load arrestors are suitable and reliable for protecting overhead static or moving loads and can be used in conjunction with other lifting equipment such as hoists. The load arrestor will automatically stop the fall of a heavy load should the primary support system fail, therefore preventing damage to the load and more importantly protecting people below.

Our load arrestors have a high strength retractable cable that extracts, following the movement of the load. This means the load arrestor can be fitted to dynamic and static loads. If the load enters into free-fall, the cable is pulled out at an accelerating rate; when the activation speed is reached, the braking system engages, bringing the load to a smooth and cushioned stop.



DESIGN



MANUFACTURE



SUPPLY



TESTING



INSTALLATION



COMMISSION



INSPECTION



Load Arrestor Range

GSE300/500/1000

300kg MWL:

- Cable lengths of 7-24m
- Weighs up to 18.3kg

500kg MWL:

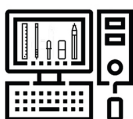
- Cable lengths of 7-24m
- Weighs up to 19.4kg

1000kg MWL:

- Cable lengths of 7 & 10m
- Weighs up to 21.5kg



Model	MWL (kg)	MAX CABLE (m)	Weight (kg)	Height (mm)	Width (mm)	Depth (mm)	Between Shackle Attachments (mm)	Max running Speed
300-1	300	12	9	370	225	135	480	0.6m/sec
300-2	300	18	14.5	450	290	135	620	0.6m/sec
300-4	300	24	18.3	390	295	190	600	0.6m/sec
500-3	500	15	15.7	450	290	135	620	0.6m/sec
500-2	500	24	19.4	390	295	190	600	0.6m/sec
1000-1	1000	10	21.5	495	290	160	670	0.6m/sec



DESIGN



MANUFACTURE



SUPPLY



TESTING



INSTALLATION



COMMISSION



INSPECTION