



G.Stop

Retractable Fall Arrester

Our G.Stop fall arrester is manufactured using precision machined components. The internal components are manufactured using bronze, stainless steel and aluminium. This ensures complete reliability and high performance even in the harshest of environments. Therefore, this makes the G.Stop fall arrester the perfect choice of safety equipment even for offshore and mining operations.

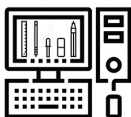
The G.Stop offers the user full protection from falling, allowing complete mobility when working at height. Should a fall occur, the G.Stop's steel cable will be pulled from the unit at an accelerating rate. Once the cable reaches a speed of 1.5m/sec, the braking system is activated. Once activated, the fall is smoothly and quickly arrested, applying minimal force upon the user's body. The load will automatically retract back into the fall arrester once the load has been released.

The G.Stop can be mounted vertically above the user or horizontally, in conjunction with a suitable anchorage point. It can also be used in partnership with our G.Tripod.



Features:

- ✓ Manufactured in the UK.
- ✓ Auto-lock karabiner.
- ✓ 136kg safe working load.
- ✓ Shock absorbing brake mechanism.
- ✓ Lightweight, aluminium casing.
- ✓ Cable lengths of 7 to 34m available.
- ✓ Weight: 9-21kg (cable length dependant)
- ✓ Stopping distance of approx. 0.6m to 1.0m.
- ✓ Galvanised or stainless steel cables available.
- ✓ CE certified, fully tested to European standards. Conforms to EN360.



DESIGN



MANUFACTURE



SUPPLY



TESTING



INSTALLATION



COMMISSION



INSPECTION